



Douglas, Qld
25 Sheerwater Parade

4 BED
3 BATH
2 CAR

keyes&co.
PROPERTY

Striking Two Storey Home by the River

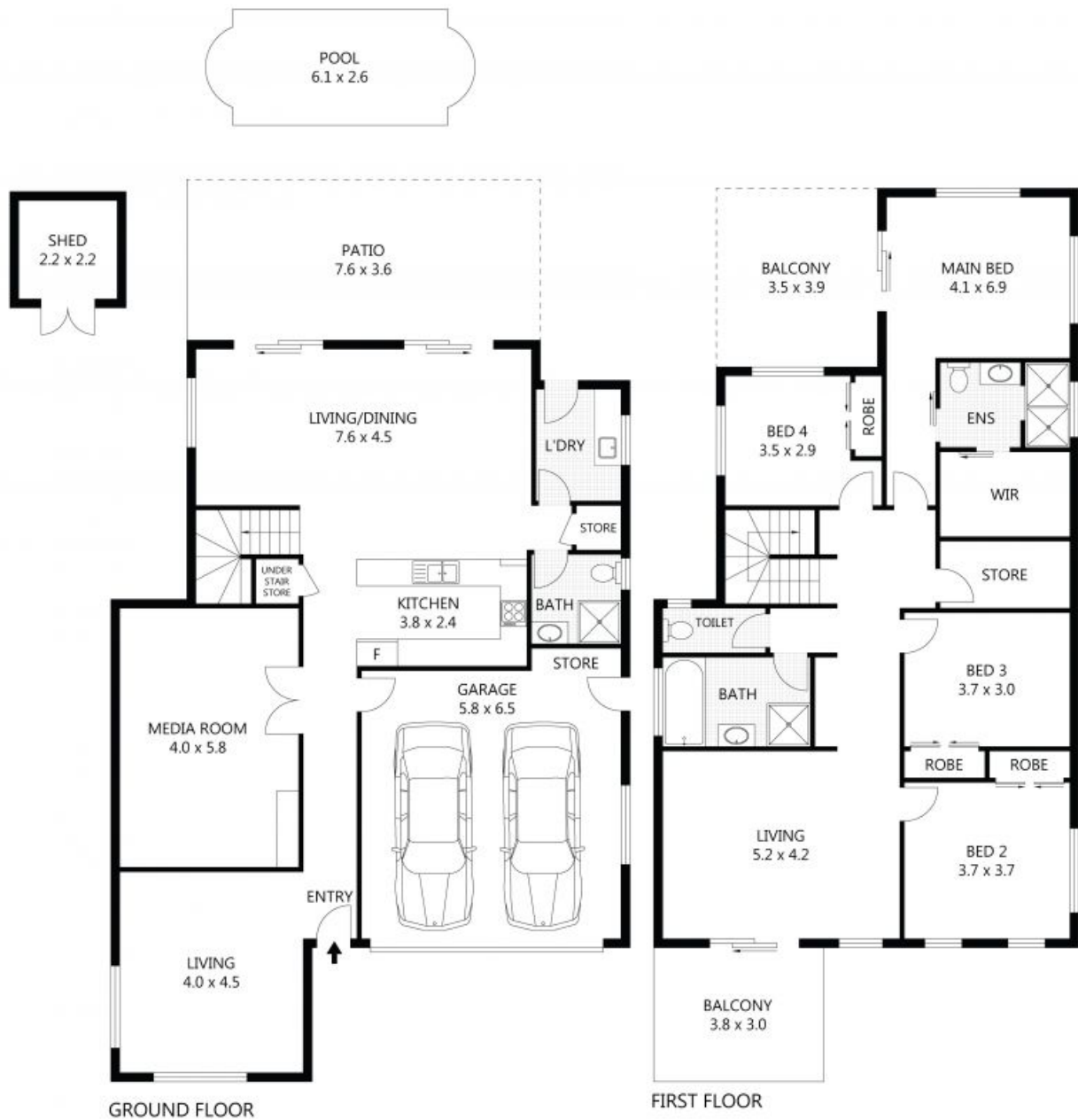
Set just metres from the river, this gorgeous family home was lovingly created by the home's original owners who are soon to be making the big move south. With quality appointments throughout and spacious living areas across both levels, this home will suit everyone from professional couples/young families to those with teenagers/adult children still at home and need their own space. All offers are invited immediately so call today and book a time to inspect.

The Property

- Generous 338m² of total home under roof
- Well-positioned on a 510m² fully fenced block with side vehicle access
- 5 KW solar system

SOLD

Contact: Damien Keyes
0418 781 421
Type: House
Sold Date: 25/02/2020
Land: 510m²
<https://www.keyesandco.com.au>



Scale in metres. Indicative only. Dimensions are approximate. All information contained herein is gathered from sources we believe to be reliable. However we cannot guarantee its accuracy and interested parties should rely on their own enquiries.

TOTAL UNDER ROOF	338m ²
RESIDENCE	243m ²
GARAGE	37m ²
PATIO	28m ²
BALCONY	24m ²
SHED	5m ²

25 Sheerwater Parade, Douglas

Plans shown are only indicative of layout. Dimensions are approximate.

Douglas, Qld
25 Sheerwater Parade