



Burdell, QLD
115 Daydream Circuit

4 BED
2 BATH
2 CAR

keyes&co.
PROPERTY

No More Need for Daydreaming

This near new 4 bedroom, 2 bathroom home offers it all with a generous Master perfectly appointed with ensuite and walk-in robe and positioned away from the other bedrooms, open plan living, dining and kitchen layout which flows seamlessly to a covered rear patio and secure, remote access car accommodation. LED and pendant lighting, stone benchtops throughout and great storage is the icing on the cake for this fantastic first home, downsizer or busy family option. No need to dream about that New Home feeling any longer, make it your reality today!

The Property

- Immaculate near new home, perfect for first home buyers, downsizers or the busy family looking for a no maintenance option

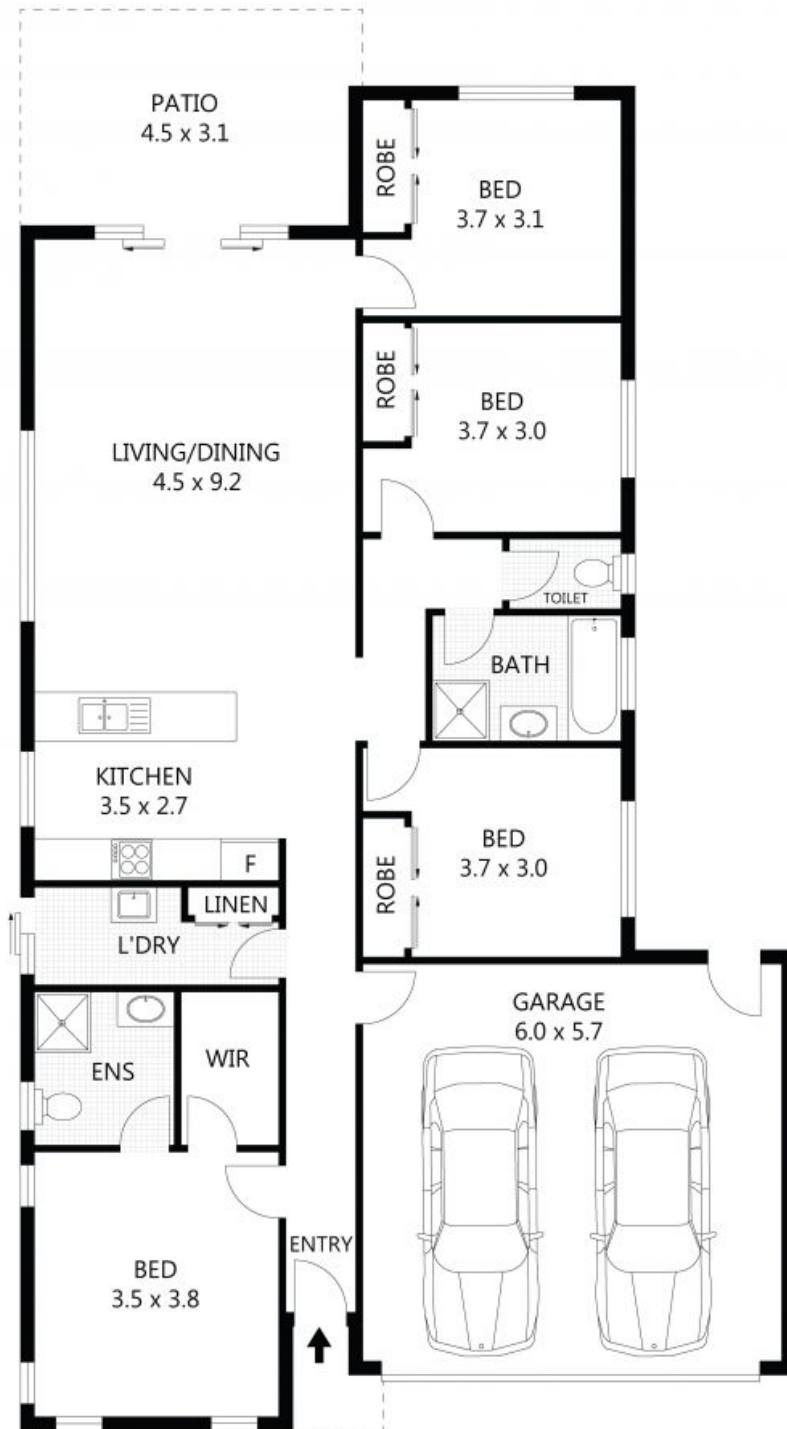
\$359,000

Contact: Alex Martin
0431 815 487

Type: House

Land: 415m2

<https://www.keyesandco.com.au>



Scale in metres. Indicative only. Dimensions are approximate. All information contained herein is gathered from sources we believe to be reliable. However we cannot guarantee its accuracy and interested parties should rely on their own enquiries.

| | | |
|------------------|---|-------------------|
| TOTAL UNDER ROOF | - | 172m ² |
| RESIDENCE | - | 123m ² |
| PATIO | - | 15m ² |
| GARAGE | - | 34m ² |

115 Daydream Circuit, Burdell

Plans shown are only indicative of layout. Dimensions are approximate.

Burdell, QLD
115 Daydream Circuit