



Mount Louisa, Qld

9 Santiago Court

4
BED

2
BATH

4
CAR

keyes&co.
PROPERTY

Wow- Shed Heaven!

This immaculately presented family home in the heart of Crestbrook Estate is sure to impress. Set on a spacious 706m² block, it comes complete with everything you could want in a family home in one of the most desirable locations in Townsville. Generous proportions both inside and out not to forget the amazing shed at the rear of the home with complete driveway side access.

The Property

- Separate living zones offer functionality and practicality
- Large kitchen with a breakfast bar and stainless-steel appliances including wall oven
- Master bedroom has an ensuite and spacious walk in wardrobe

SOLD

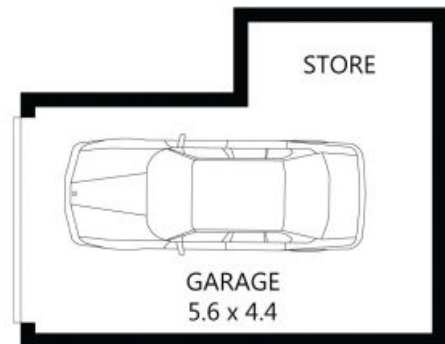
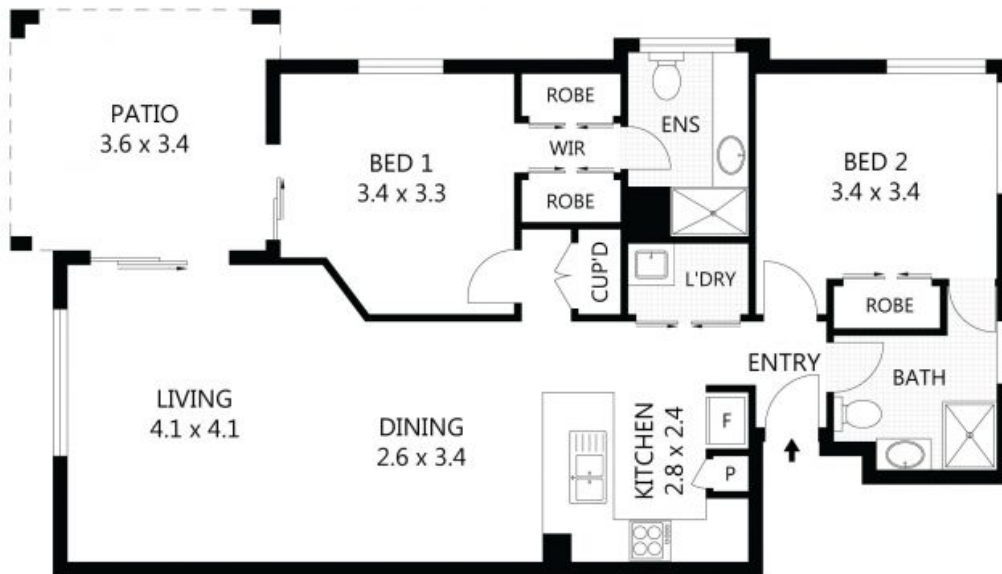
Contact: Tess Sellwood
0439 793 559

Type: House

Sold Date: 25/10/2019

Land: 706m²

<https://www.keyesandco.com.au>



Scale in metres. Indicative only. Dimensions are approximate. All information contained herein is gathered from sources we believe to be reliable. However we cannot guarantee its accuracy and interested parties should rely on their own enquiries.

TOTAL UNDER ROOF	114m ²
RESIDENCE	77m ²
GARAGE/STORE	21m ²
PATIO	12m ²

64/34 Bundock Street, Belgian Gardens

Plans shown are only indicative of layout. Dimensions are approximate.

Mount Louisa, Qld
9 Santiago Court