



**Kirwan, Qld**  
9 Plumtree Place

**3** BED  
**1** BATH  
**2** CAR

**keyes&co.**  
PROPERTY

**Quick this is â€”THE BUY!â€”™**

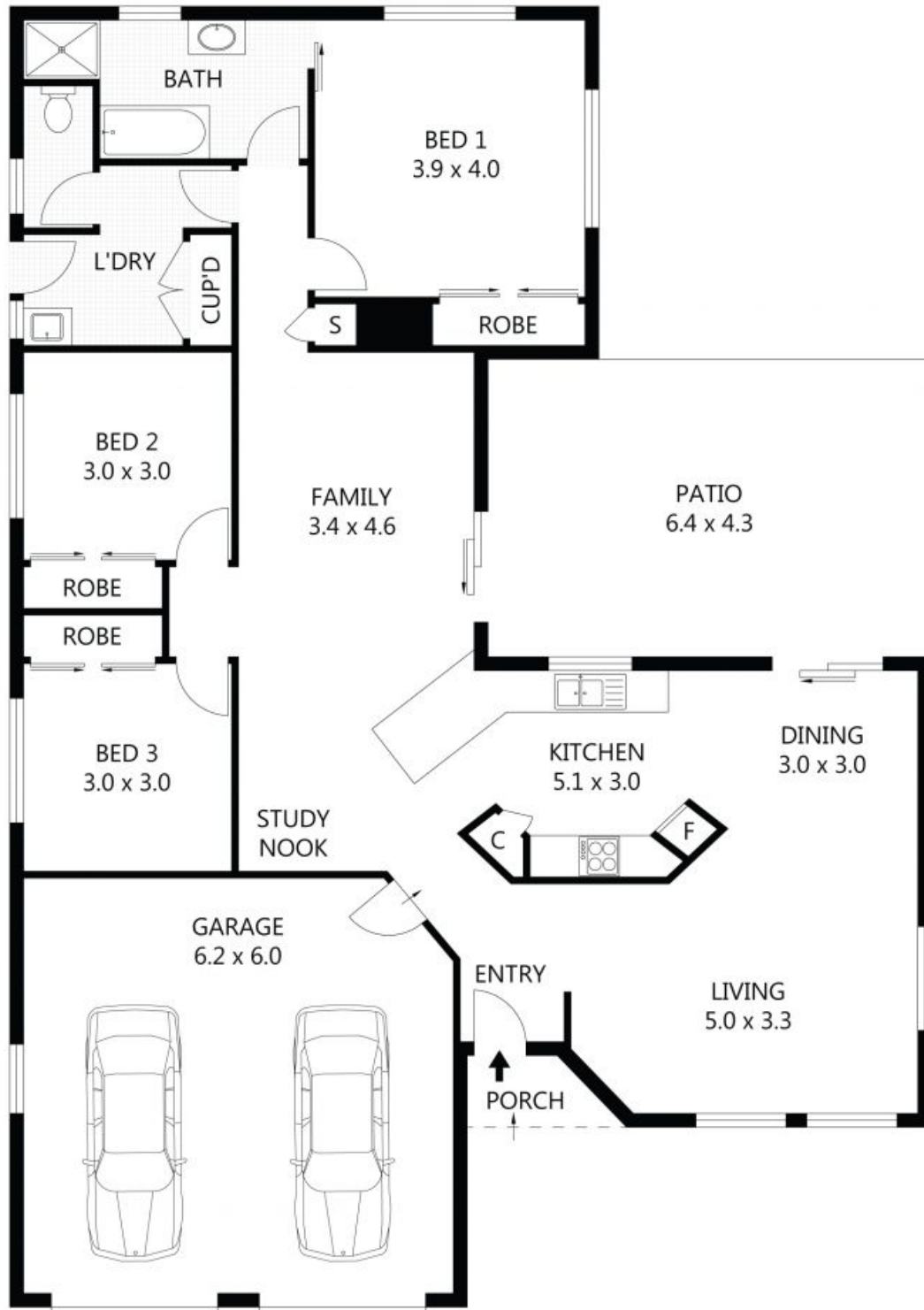
This well presented home offers an attractive and practical design. Nestled perfectly in a quiet section of the sought after Kirwan Precinct, fully fenced this private home offers ease of living with all amenities at your doorstep. Plus it is moments away from The Kirwan Shopping Precinct, 1300 Smile Stadium and access to the overpass linking you to Townsville General Hospital and James Cook University.

**SOLD**

**Contact:** Tess Sellwood  
0439 793 559  
**Type:** House  
**Sold Date:** 20/09/2017  
**Land:** 740m2  
<https://www.keyesandco.com.au>

The Property

- Suitable for home owners or savvy investors
- Open plan lounge dining space blends into alfresco area
- Second combined living dining area
- Galley style kitchen with plenty of storage



Scale in metres. Indicative only. Dimensions are approximate. All information contained herein is gathered from sources we believe to be reliable. However we cannot guarantee its accuracy and interested parties should rely on their own enquiries.

Residence	-	128m <sup>2</sup>
Garage	-	38m <sup>2</sup>
Patio	-	28m <sup>2</sup>
Porch	-	2m <sup>2</sup>

# 9 Plumtree Place, Kirwan

Plans shown are only indicative of layout. Dimensions are approximate.

**Kirwan, Qld**  
9 Plumtree Place