



**Hermit Park, QLD**  
2/22-24 Marks Street

**2** BED **1** BATH **1** CAR

**keyes&co.**  
PROPERTY

**Inner City Dreamer!!!**

Set in a prime location in the heart of Hermit Park, this function townhouse boasts a timeless design intended for comfort and functionality. Offering a tranquil lifestyle, it is located near a range of quality schools and public transport options.

The Property

- Sunlit open plan living/dining zones flows to the private compact terrace
- Modern open kitchen boasts a large island bench - Upper level master retreat has built-in/robes
- Single carport with extra lockable storage area
- Downstairs internal laundry with second toilet
- Air conditioning, ceiling fans, modern fittings with neutral tones

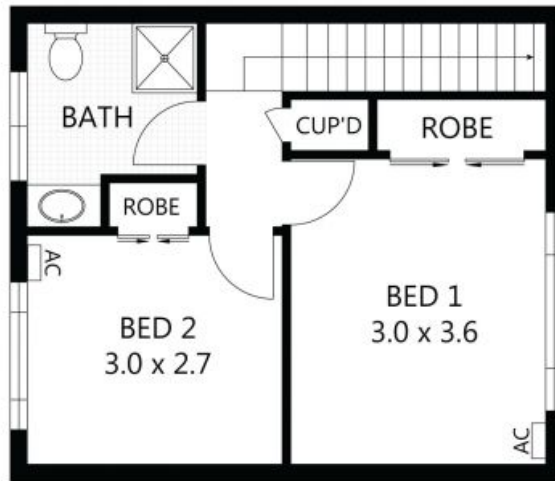
**SOLD**

**Contact:** Tess Sellwood  
0439 793 559

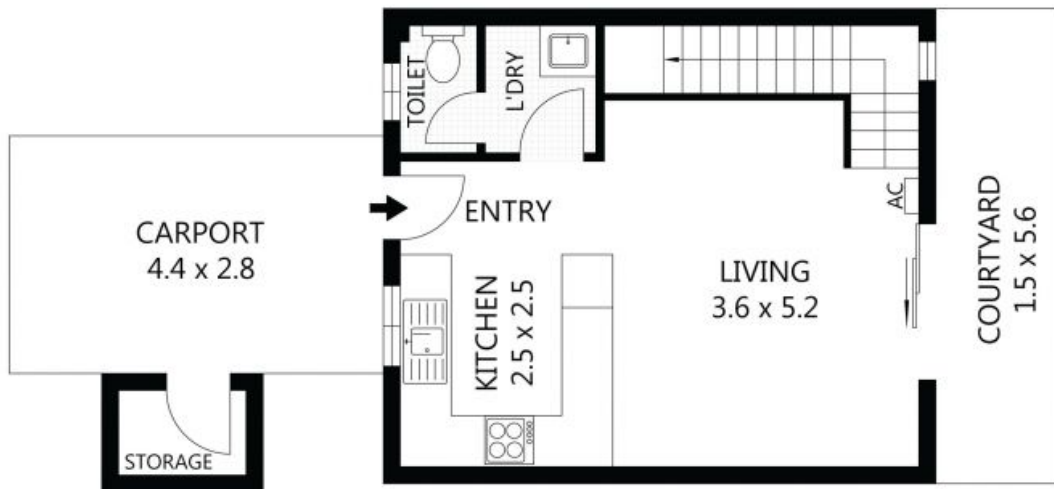
**Type:** Unit  
**Sold Date:** 14/06/2017

**Land:** 72m2

<https://www.keyesandco.com.au>



FIRST FLOOR



GROUND FLOOR



Scale in metres. Indicative only. Dimensions are approximate. All information contained herein is gathered from sources we believe to be reliable. However we cannot guarantee its accuracy and interested parties should rely on their own enquiries.

|              |   |                        |
|--------------|---|------------------------|
| <b>Total</b> | - | <b>85m<sup>2</sup></b> |
| Residence    | - | 65m <sup>2</sup>       |
| Carport      | - | 12m <sup>2</sup>       |
| Courtyard    | - | 8m <sup>2</sup>        |

Plans shown are only indicative of layout. Dimensions are approximate.

**Hermit Park, QLD**  
2/22-24 Marks Street