



**Kirwan, QLD**  
36 Sheperd Circuit

**4** BED  
**2** BATH  
**2** CAR

**keyes&co.**  
PROPERTY

**Easy to Love!!!**

Low-maintenance living, in a great location within short distance to the Kirwan Shopping Centre, parks, Domain Central and quality junior and senior schools. This flat 666m2 block allows for side access to a function yard area. Whilst offering a great floor plan which is easy to love.

The Property

- Spacious formal and informal lounge and dining area
- Generous sized kitchen with dishwasher and breakfast area.
- Master bedroom with good storage and private positioning at the rear of the home
- All Bedrooms offer good size and storage
- Fantastic open plan design which enables functionality

**SOLD**

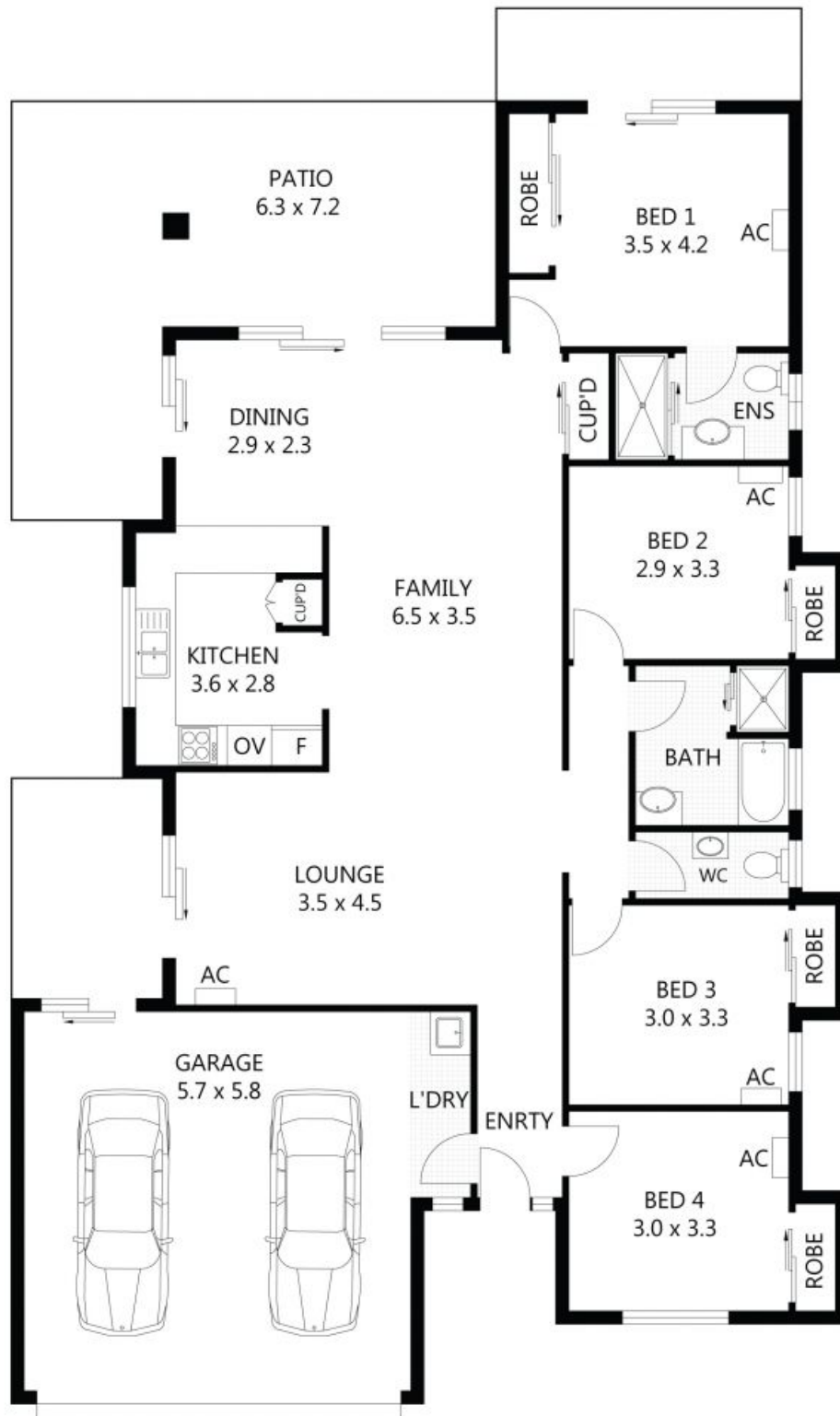
**Contact:** Tess Sellwood  
0439 793 559

**Type:** House

**Sold Date:** 10/08/2017

**Land:** 666m2

<https://www.keyesandco.com.au>



Scale in metres. Indicative only. Dimensions are approximate. All information contained herein is gathered from sources we believe to be reliable. However we cannot guarantee its accuracy and interested parties should rely on their own enquiries.

TOTAL	-	198m <sup>2</sup>
Residence	-	134m <sup>2</sup>
Patio	-	31m <sup>2</sup>
Garage	-	33m <sup>2</sup>

Plans shown are only indicative of layout. Dimensions are approximate.

**Kirwan, QLD**  
36 Sheperd Circuit