



Mount Louisa, QLD

10 Gadsden Loop

4 BED
2 BATH
4 CAR

keyes&co.
PROPERTY

952m2 Block and 9mx7m Shed!

With the current owners of this immaculately presented 2 year old home making a definitive move further down south, this quality built LJ Grady home must be sold. Featuring 4 good sized bedrooms, 3 distinctly separate living zones and a huge 9m x 7m powered shed, this property has been priced well below replacement cost.

The Property

- Quality built LJ Grady home, only 2 years old
- Fully landscaped, irrigated 953m2 allotment
- Approximately 315m2 of under roof living space including massive powered shed
- 4 good sized bedrooms, all carpeted with built-in wardrobes and split system air-conditioning

SOLD

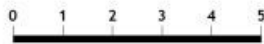
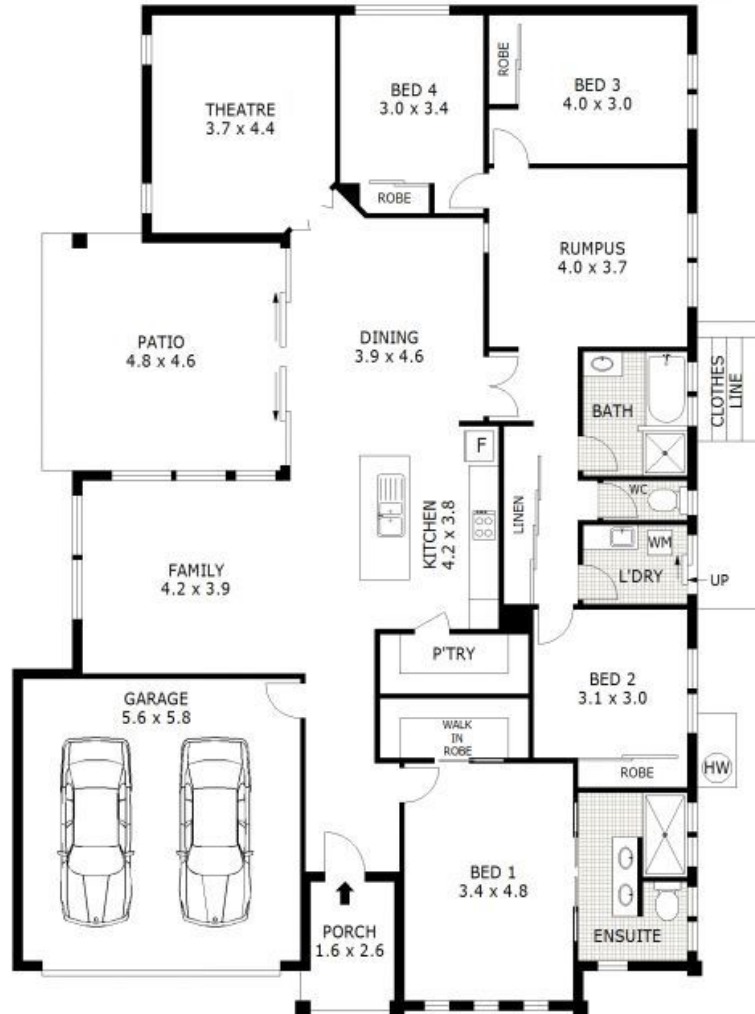
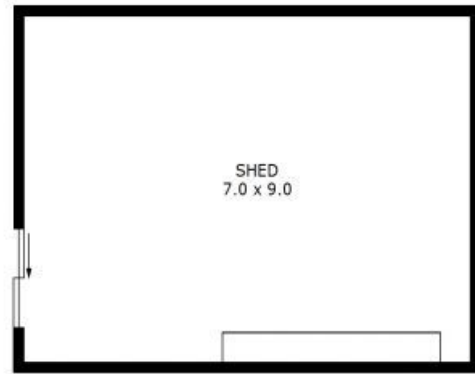
Contact: Damien Keyes
0418 781 421

Type: House

Sold Date: 30/01/2016

Land: 953m2

<https://www.keyesandco.com.au>



Scale in metres. Indicative only. Dimensions are approximate. All information contained herein is gathered from sources we believe to be reliable. However we cannot guarantee its accuracy and interested parties should rely on their own enquiries.

Residence	- 193.12m ²
Garage	- 35.40m ²
Patio	- 19.60m ²
Porch	- 4.32m ²
Total	- 252.44m²

10 Gadsden Loop, Mount Louisa

Plans shown are only indicative of layout. Dimensions are approximate.

Mount Louisa, QLD
10 Gadsden Loop