



**Kirwan, QLD**  
19 Earl Circuit

**4** BED  
**2** BATH  
**2** CAR

**keyes&co.**  
PROPERTY

**Big Heart all on 754sqm!!!**

Enjoy the ultimate lifestyle with this generous and contemporary family home. It's set across a single level with a north to rear aspect and offers versatile indoor/outdoor living, within moments of a selection of quality schools, Willows shopping precinct and Ring Road accessibility.

The Property

- Spacious casual indoor and outdoor living areas coupled with 2.7m high ceilings
- All-weather oversized alfresco area plus excellent usable, fully fenced land with great side access
- Open plan kitchen with extra storage for all the family's needs
- Bright and airy bedrooms all featuring built-in wardrobes, full air-conditioning

**SOLD**

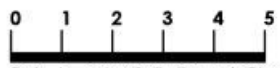
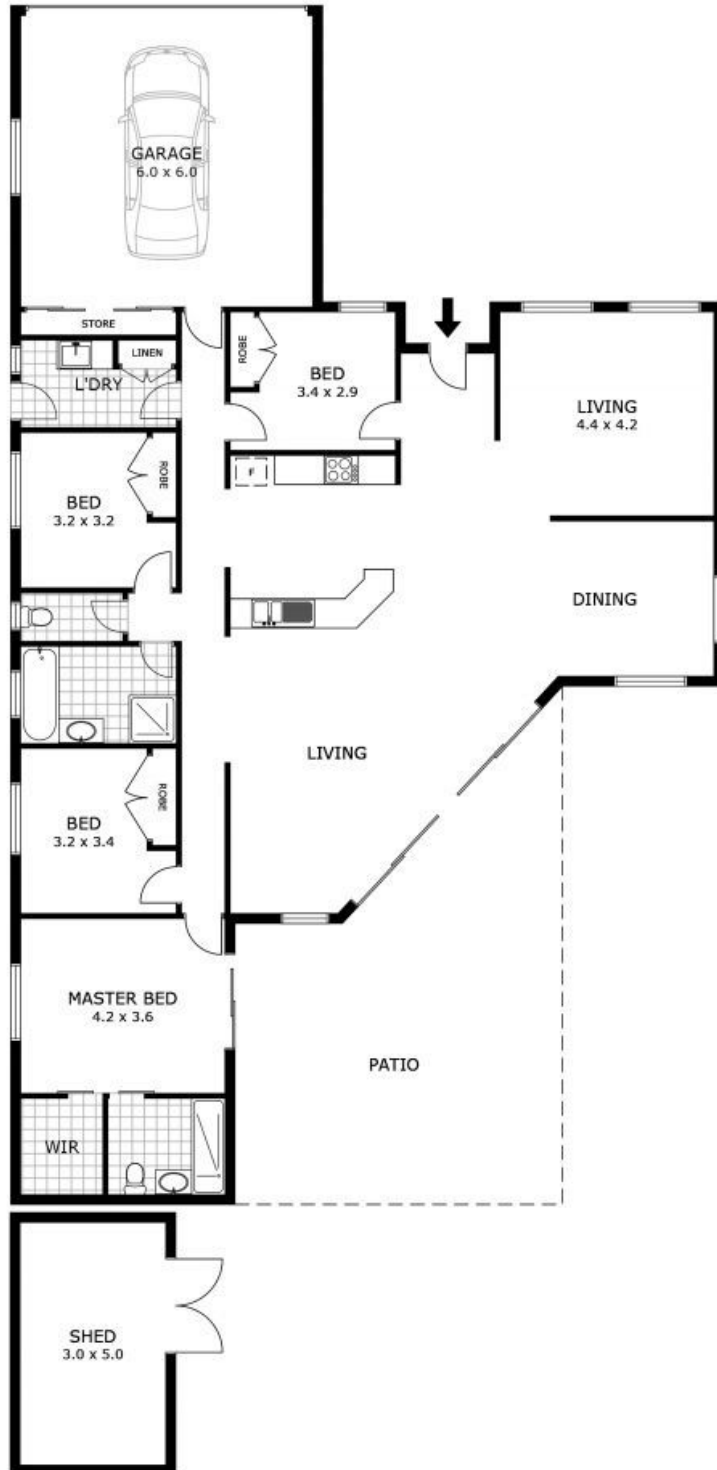
**Contact:** Tess Sellwood  
0439 793 559

**Type:** House

**Sold Date:** 13/07/2015

**Land:** 754m<sup>2</sup>

<https://www.keyesandco.com.au>



Scale in metres. Indicative only. Dimensions are approximate. All information contained herein is gathered from sources we believe to be reliable. However we cannot guarantee its accuracy and interested parties should rely on their own enquiries.

<b>Total Area</b>	<b>- 292 m<sup>2</sup></b>
Residence	- 184 m <sup>2</sup>
Garage	- 40 m <sup>2</sup>
Shed	- 18 m <sup>2</sup>
Patio	- 50 m <sup>2</sup>

## 19 Earl Cct, Kirwan

Plans shown are only indicative of layout. Dimensions are approximate.