



## West End, QLD

10/6-24 Henry Street

**2** BED  
**2** BATH  
**1** CAR

**keyes&co.**  
PROPERTY

### Massive price reduction

Enjoying an elevated outlook across Henry Street from your very own private balcony up to Castle Hill this competitively priced apartment ticks all the boxes for both investors and owner occupiers. Offering well-appointed interiors throughout its generous 120 square meters of living space. The apartment is only a short drive to the CBD with public transport at your door and only moments to both major shopping and local corner stores.

#### The Property

- Generous sized living room that spills out onto the balcony
- Both bedrooms with built in robes master with ensuite
- Large tiled balcony, with cool breezes and views to castle hill

### SOLD

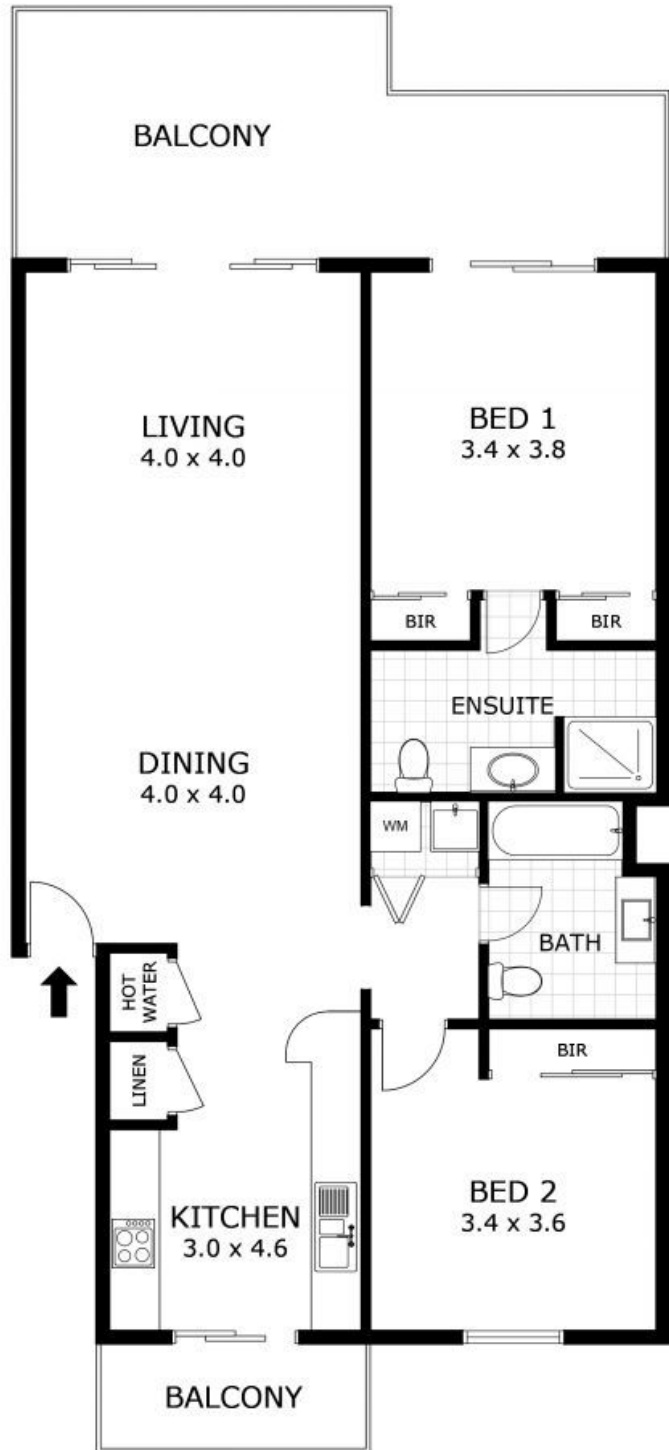
**Contact:** Kirsty Keyes  
0407 960 743

**Type:** Unit

**Sold Date:** 06/11/2015

**Land:** 138m<sup>2</sup>

**<https://www.keyesandco.com.au>**



Scale in metres. Indicative only. Dimensions are approximate. All information contained herein is gathered from sources we believe to be reliable. However we cannot guarantee its accuracy and interested parties should rely on their own enquiries.

**Total - 120 m<sup>2</sup>**  
**Residence - 96 m<sup>2</sup>**  
**Balcony - 24 m<sup>2</sup>**

**U10/6-24 Henry Street, West End**

Plans shown are only indicative of layout. Dimensions are approximate.

**West End, QLD**  
 10/6-24 Henry Street