



Douglas, QLD

10 Dotterel Close

4
BED

2
BATH

2
CAR

keyes&co.
PROPERTY

Massive 1014m² room for everything!

Beyond its immaculate presentation, this fantastic family home presents with a free-flowing floor plan that offers easy options for both indoor and outdoor entertaining. Tucked away on the high side of a cul-de-sac it makes the perfect choice for budget conscious families looking for that perfect mix between design and functionality.

SOLD

Contact: Damien Keyes
0418 781 421

Type: House

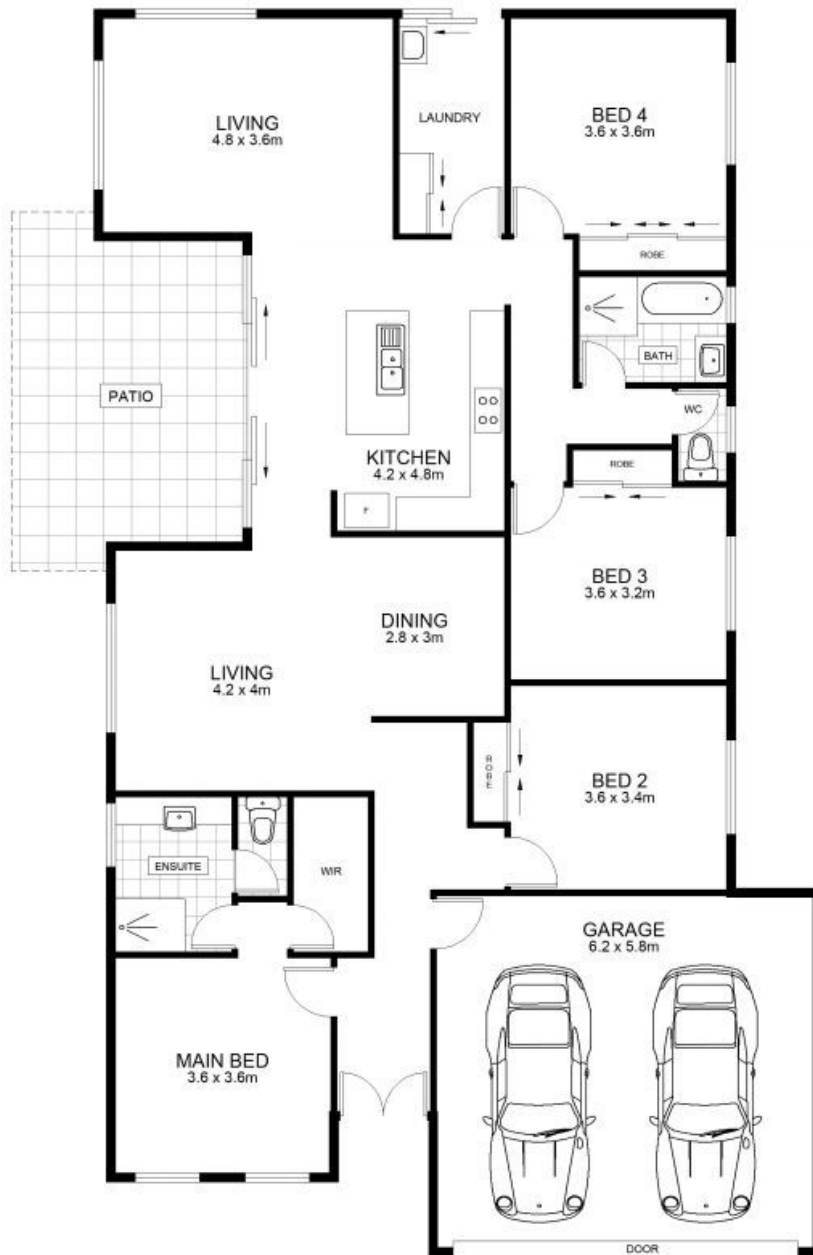
Sold Date: 19/09/2013

Land: 1014m²

<https://www.keyesandco.com.au>

The Property

- Large fully fenced allotment of 1,014m²
- Side vehicle access room for large shed plus pool
- Set at the end of a quiet court, only one neighbour
- Elevated positioning takes advantage of the afternoon breezes



Scale in metres. Indicative only. Dimensions are approximate. All information contained herein is gathered from sources we believe to be reliable. However we cannot guarantee its accuracy and interested persons should rely on their own enquiries.

INT : 160m²
 GARAGE : 38m²
 EXT : 20m²



10 Dotterel Close, Douglas

Floor plan by www.topsnap.com 1300 867 762

Plans shown are only indicative of layout. Dimensions are approximate.

Douglas, QLD
 10 Dotterel Close