



**Douglas, QLD**  
10 Inlet Retreat

**4** BED **2** BATH **2** CAR

**keyes&co.**  
PROPERTY

**Builders Own...**

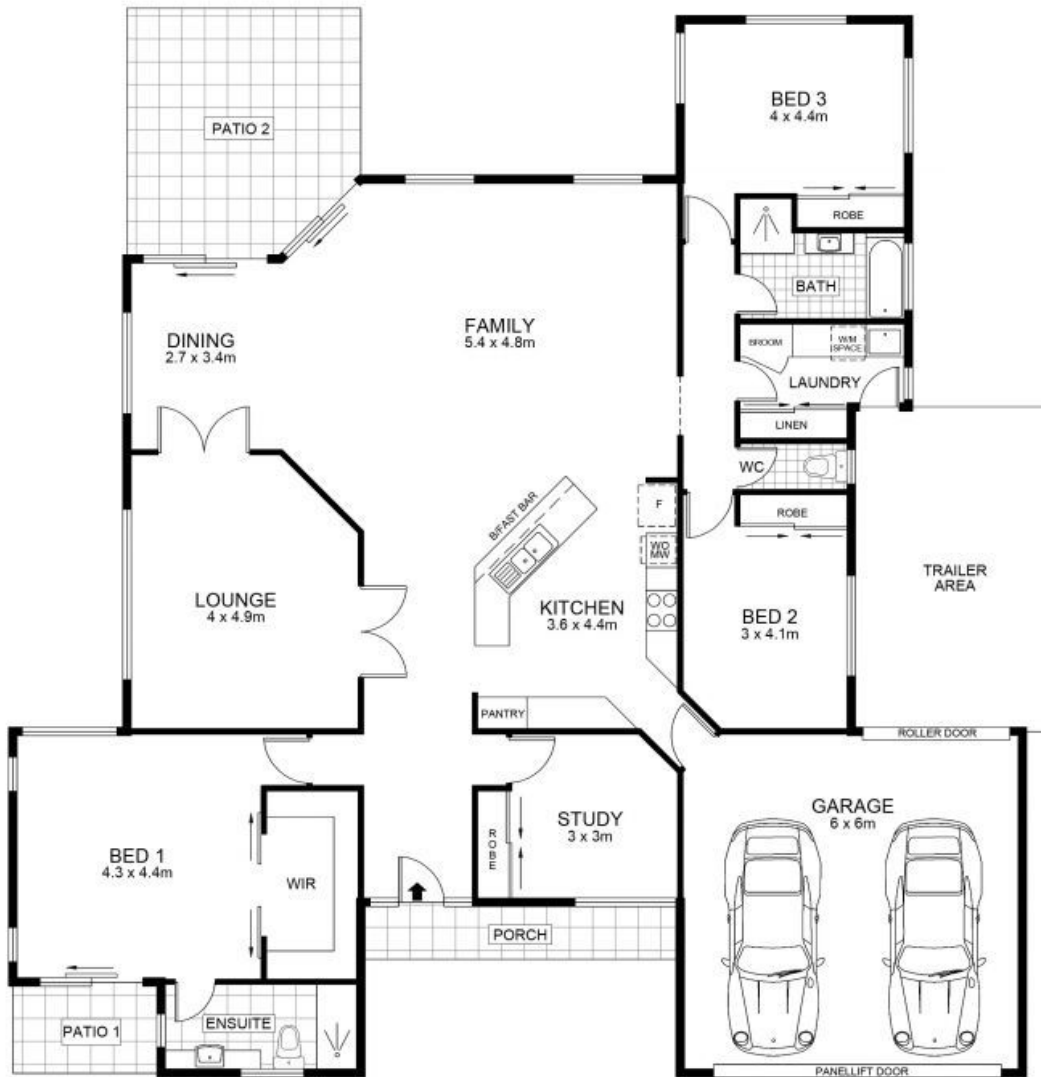
Functional, easy care and child-friendly, this thoughtfully designed home presents a statement in style and sophistication. A spacious family residence with an abundance of natural light throughout with an option for dual living, studio or teenagers retreat.

The Property

- Generous 752m2 Block, side access and no rear neighbours
- 7.4m x 3.2m shed with power & fully lined internally plus fan so it can double as workshop or teenager's retreat
- Slightly elevated from the street to catch the breezes
- Versatile floor plan with a selection of living zones
- Enclosed theatre room with French doors & purpose built cabinetry

**SOLD**

**Contact:** Damien Keyes  
0418 781 421  
**Type:** House  
**Sold Date:** 18/10/2013  
**Land:** 752m2  
<https://www.keyesandco.com.au>



Scale in metres. Indicative only. Dimensions are approximate. All information contained herein is gathered from sources we believe to be reliable. However we cannot guarantee its accuracy and interested persons should rely on their own enquiries.

INT : 198m<sup>2</sup>  
 GARAGE : 40m<sup>2</sup>  
 EXT : 27m<sup>2</sup>

## 10 Inlet Retreat, Douglas

Floor plan by [www.topsnap.com](http://www.topsnap.com) 1300 867 762

Plans shown are only indicative of layout. Dimensions are approximate.

**Douglas, QLD**  
 10 Inlet Retreat